

**Nilda (Nena) Peragallo Montano, Dean and Professor, Associate CNO for Academic Affairs UNC Healthcare**

Cathy Madigan, Associate Dean for UNC Hospitals-School of Nursing & Senior Vice President/CNO UNC Hospitals

Robin King, Executive Assistant

Kimberly Cook, Admin. Support Assoc.

Peggy Wilmoth, Exec. Vice Dean/Assoc. Dean for Academic Affairs

Ruth Anderson, Assoc. Dean, Research

Marianne Baernholdt, Assoc. Dean, Global Initiatives

Lisa Miller, Assoc. Dean, Administration

Kelly Kirby, Assoc. Dean, Advancement

Shielda Rodgers, Asst. Dean, Inclusive Excellence

TBA, Asst. Dean, Community Engagement and Strategic Partnerships

Mary Schuler, AHEC Liaison

Patricia Silveyra Director, BBL

Kathy Moore, Asst. Dean, Student Affairs

Greg Workman, Director, RSC

Louise Fleming, Assoc. Dean, Undergraduate Division and Undergraduate Program

Karen Echols, Asst Dean, IIT

Mariah Keller, Director, Communications

Deborah Shuntich, Budget Analyst

Shannon Smith, Director, Development

Trent Hopper, Director, Administrative Services

Deanna Wilkie, Director, Annual Giving and Donor and Alumni Relations

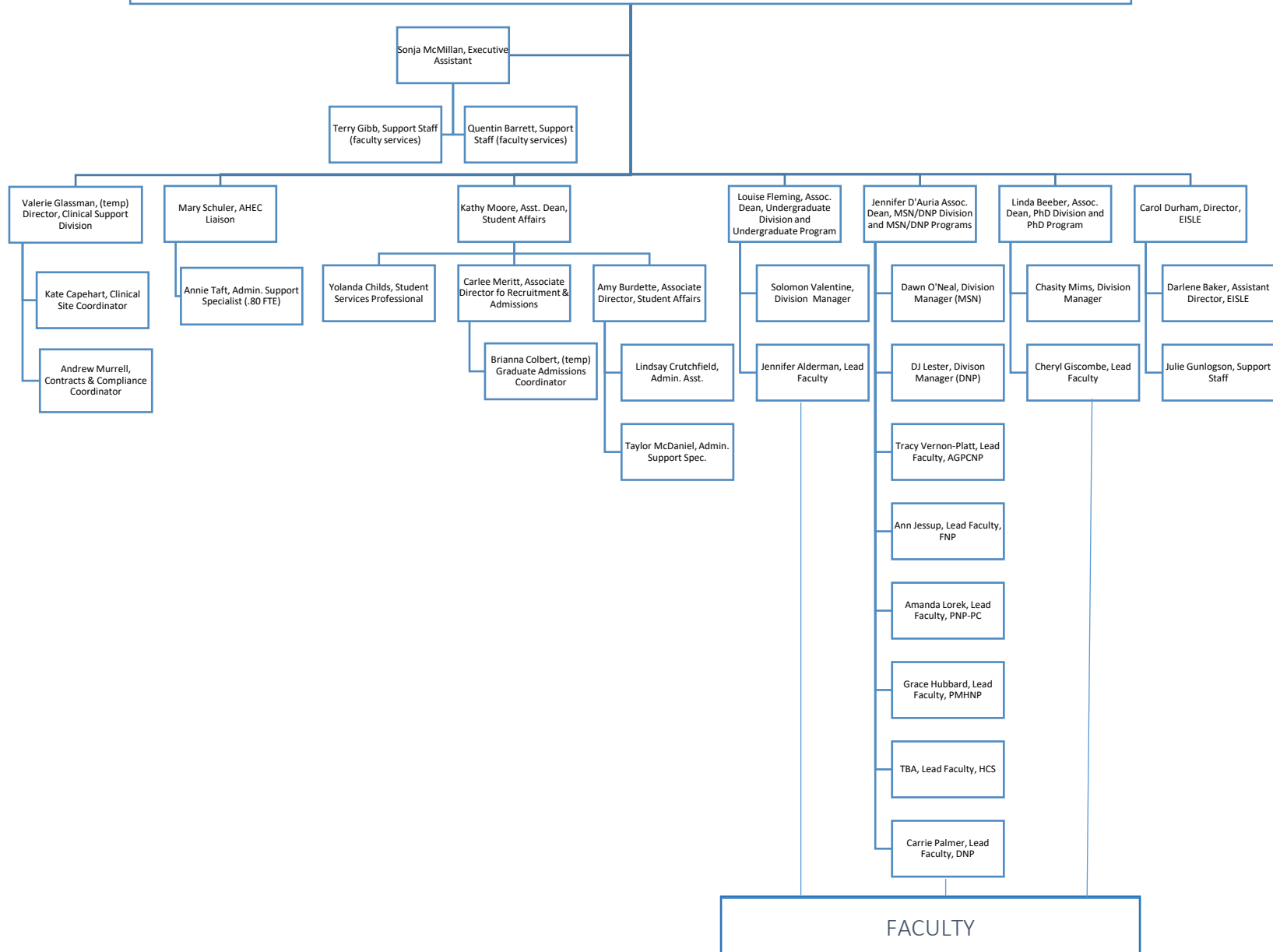
Jennifer D'Auria, Assoc. Dean, MSN/DNP Division and MSN/DNP Programs

Linda Beeber, Assoc. Dean, PhD Division and PhD Program

Carol Durham, Director, EISLE and Director, IPEP

**Faculty**

# Peggy Wilmoth, Executive Vice Dean/Associate Dean for Academic Affairs

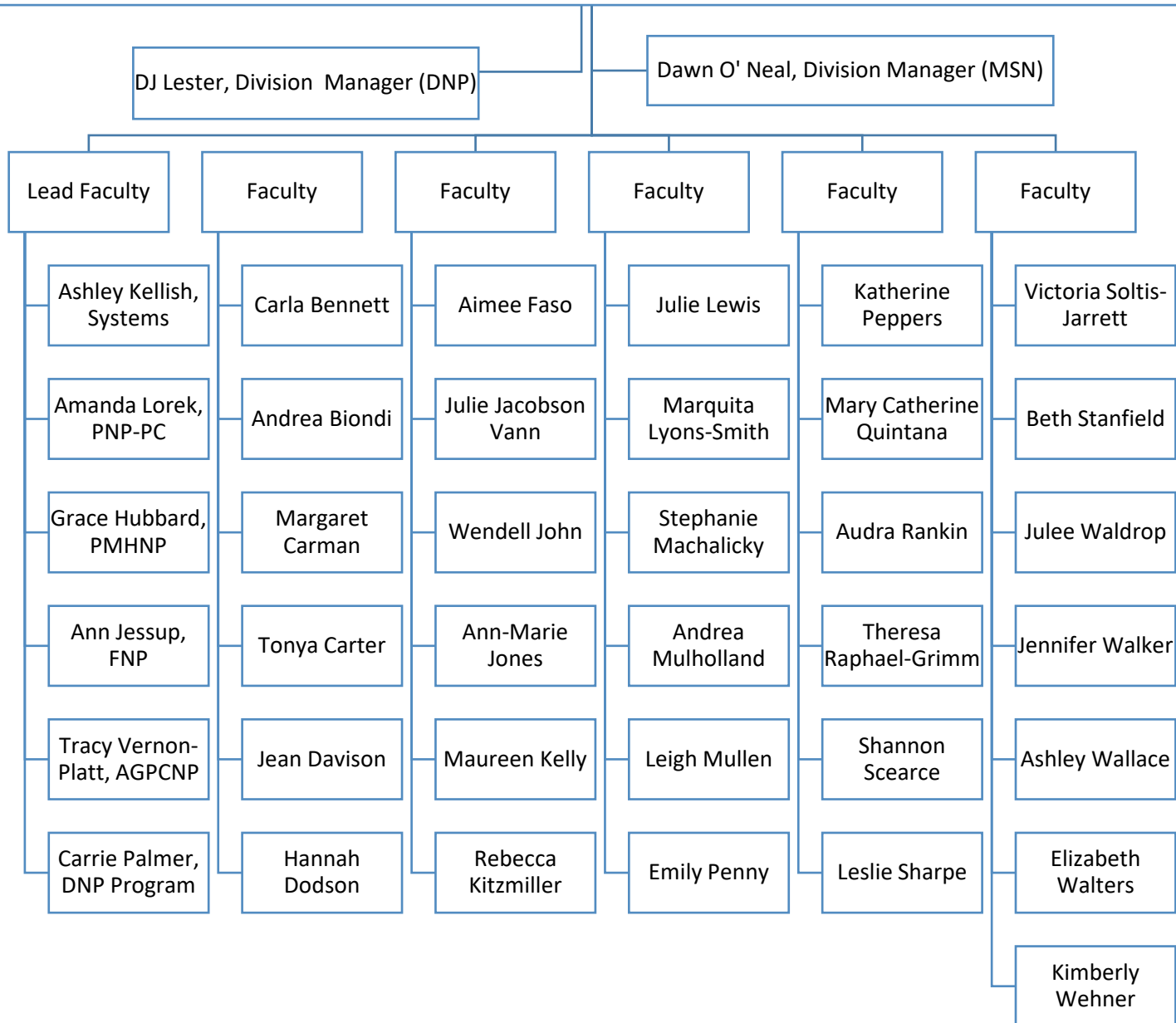


# Louise Fleming, Assoc. Dean, Undergraduate Division and Undergraduate Program

Solomon  
Valentine, Division  
Manager

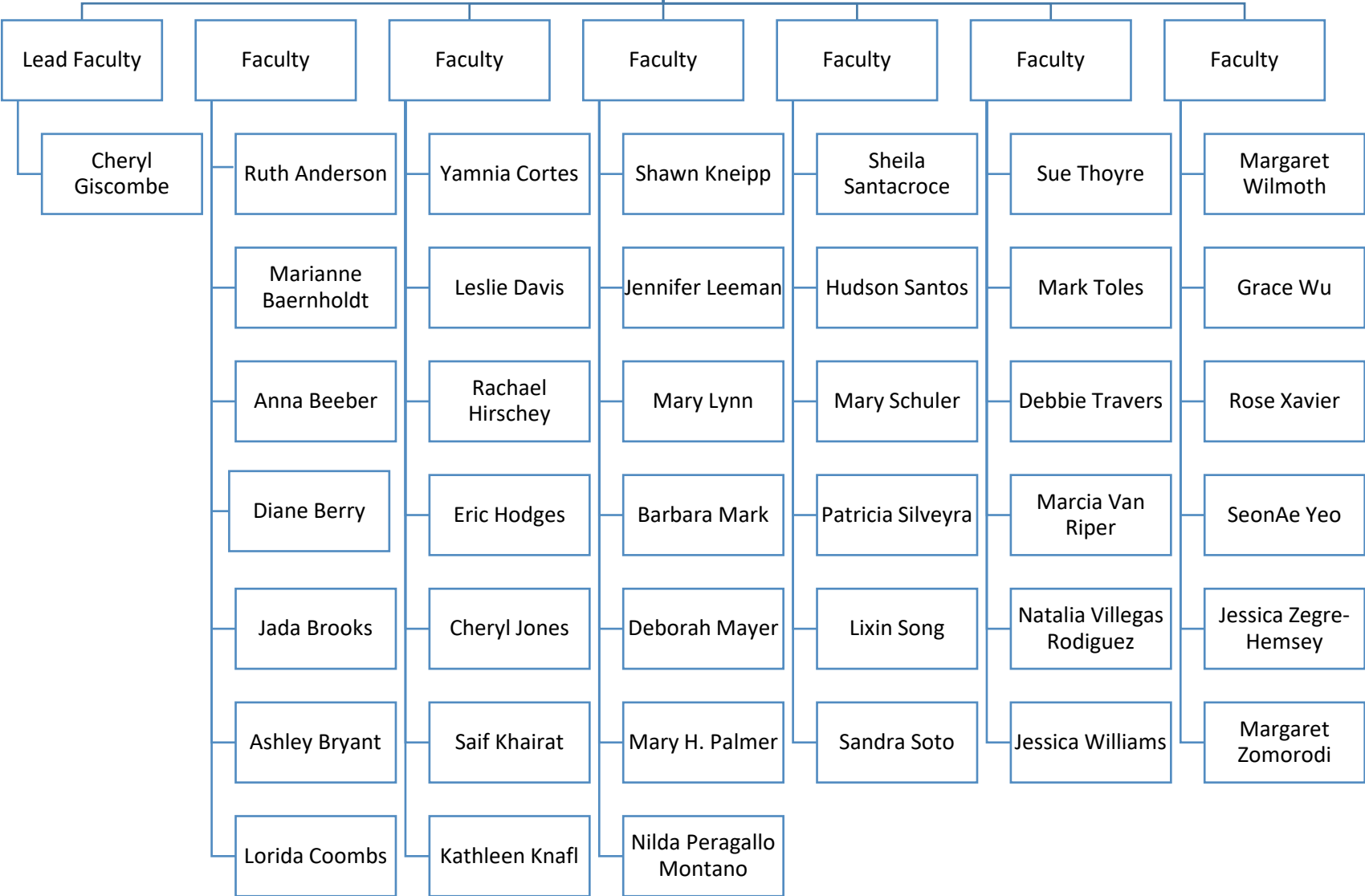


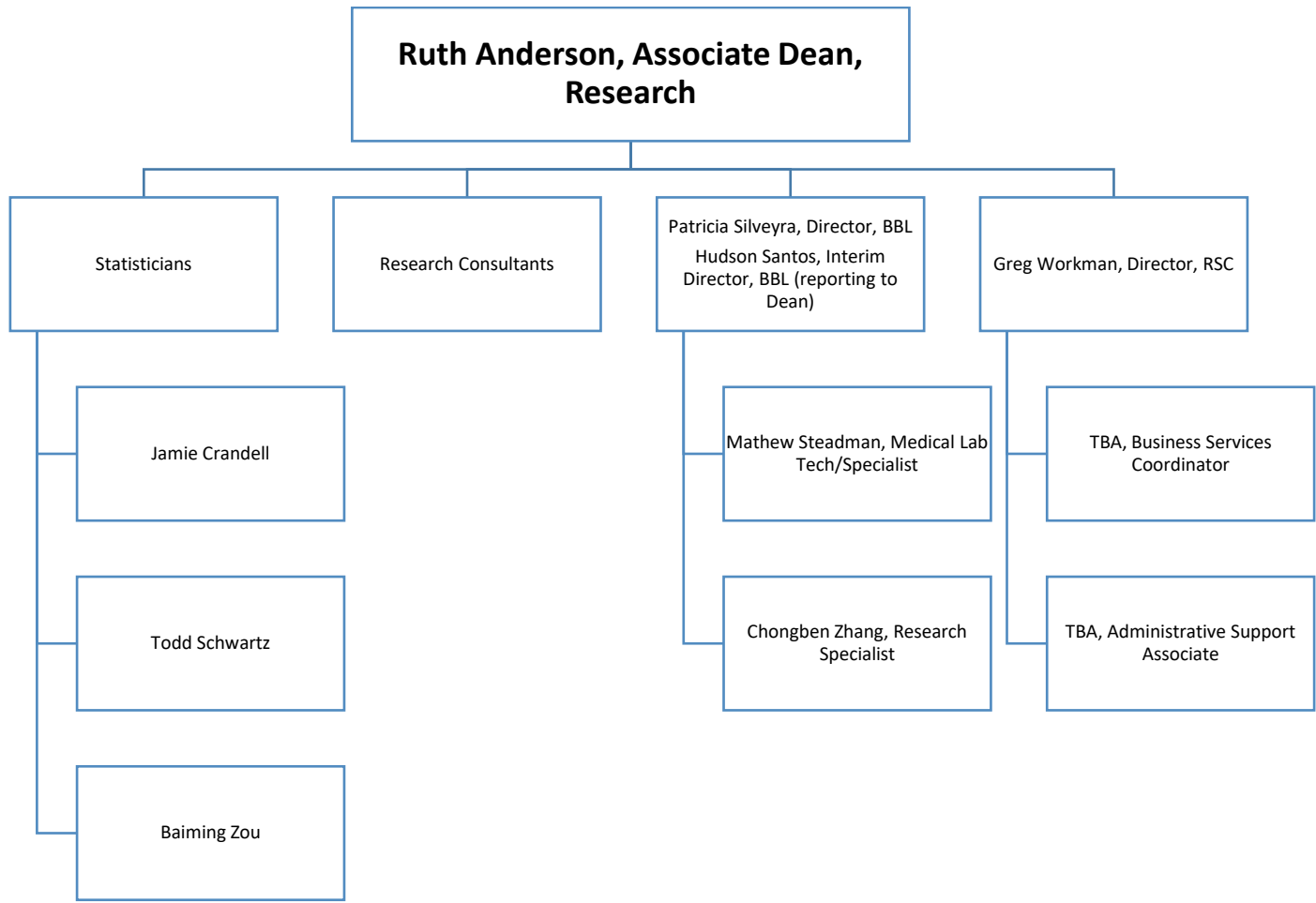
# Jennifer D'Auria, Assoc. Dean, MSN/DNP Division and MSN/DNP Programs



# Linda Beeber, Assoc. Dean, PhD Division and PhD Program

Chasity Mims, Division Manager





**Marianne Baernholdt, Associate  
Dean, Global Initiatives**

Kathy Lebbad, Executive Assistant  
(.50 FTE shared services)

# Lisa Miller, Associate Dean, Administration

